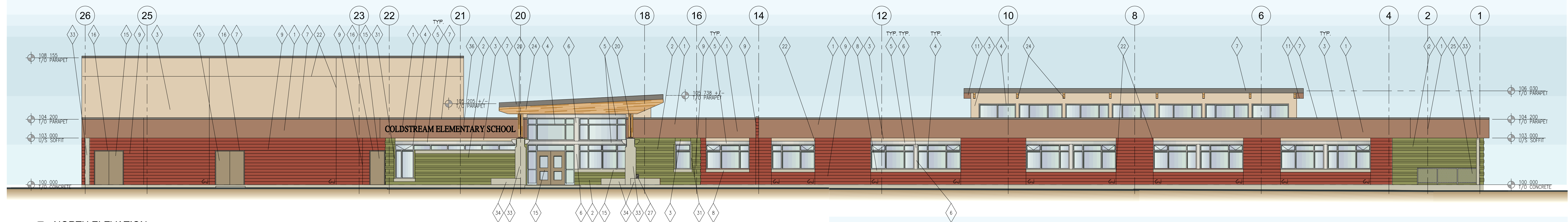
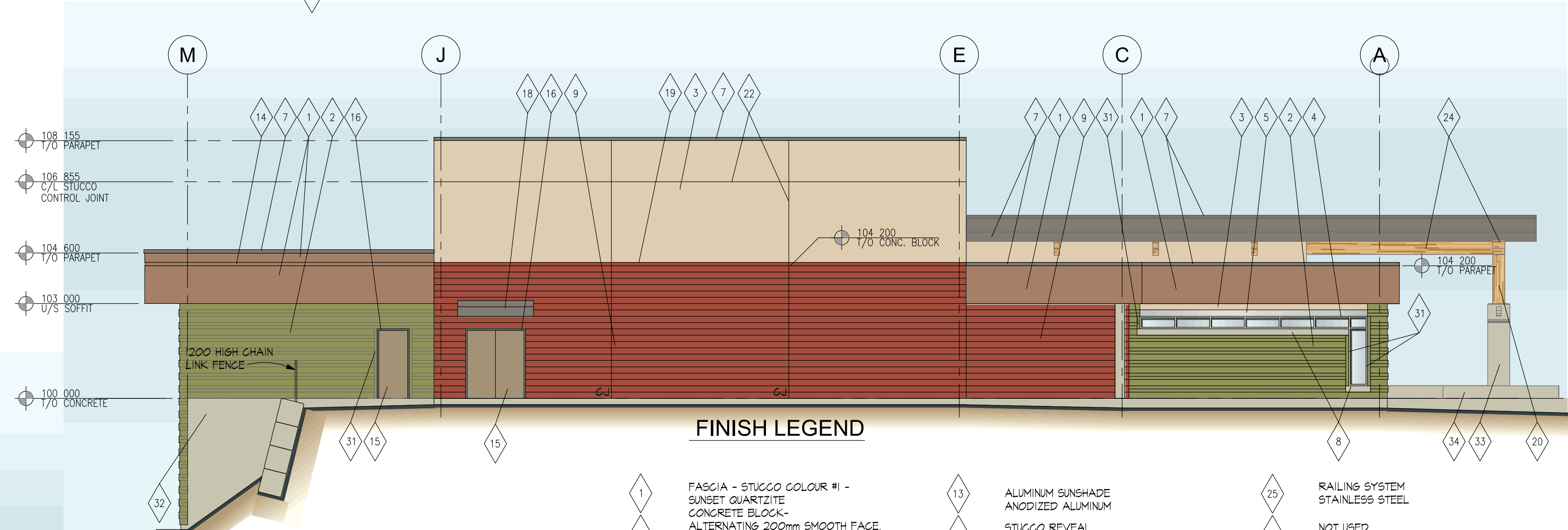


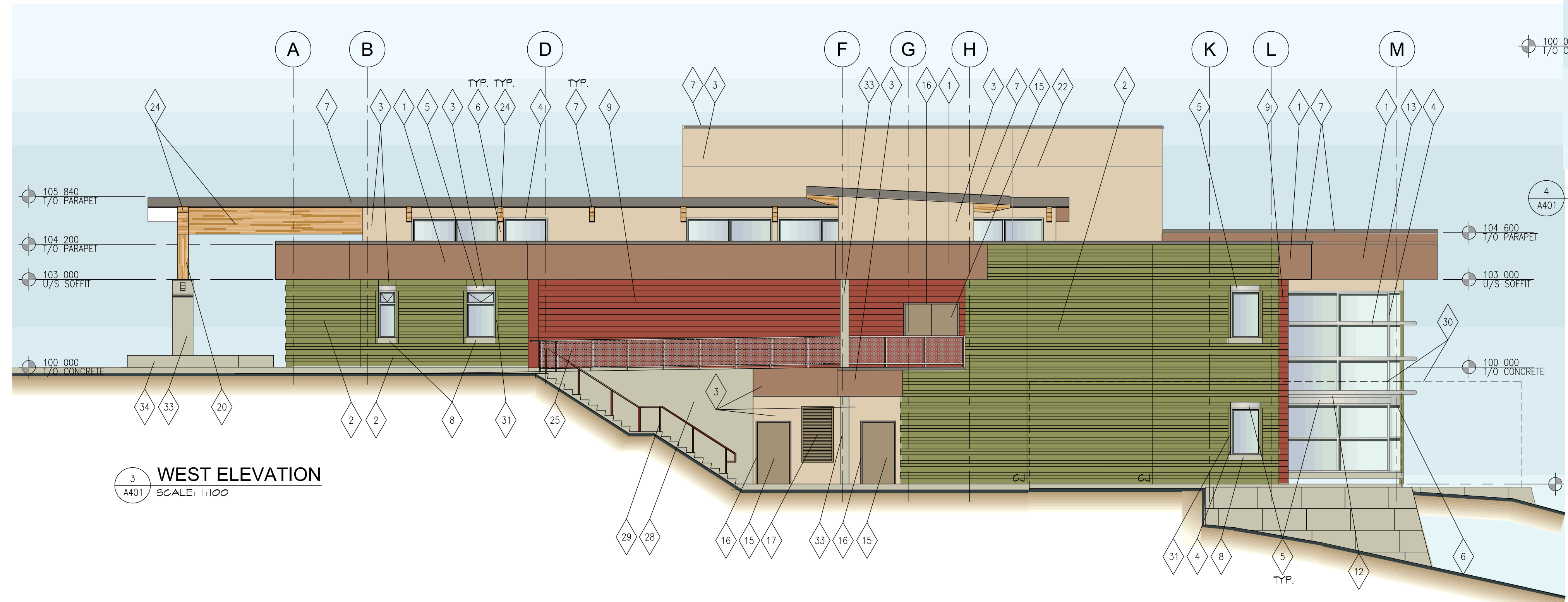
1 SOUTH ELEVATION
A401 SCALE: 1:100



2 NORTH ELEVATION
A401 SCALE: 1:100



4 EAST ELEVATION
A401 SCALE: 1:100



3 WEST ELEVATION
A401 SCALE: 1:100

FINISH LEGEND

- | | | |
|--|--|---|
| 1 FASCIA - STUCCO COLOUR #1 - SUNSET QUARTZITE | 13 ALUMINUM SUNSHADE ANODIZED ALUMINUM | 25 RAILING SYSTEM STAINLESS STEEL |
| 2 CONCRETE BLOCK - ALTERNATING 200mm SMOOTH FACE CANTILEVERED 2 - 100mm SMOOTH FACE COLOUR EUCALYPTUS LEAF | 14 STUCCO REVEAL | 26 NOT USED |
| 3 STUCCO COLOUR #2 - COPPERTAN QUARTZITE | 15 SEE DETAIL JABOS COLOUR TO MATCH ADJACENT STUCCO | 27 SIAMESE CONNECTION REFER TO MECHANICAL |
| 4 DOOR PAINTED COLOUR: REINDEER | 16 MECHANICAL LOUVRE, PAINTED COLOUR: REINDEER | 28 CONCRETE |
| 5 CLEAR ANODIZED ALUMINUM WINDOW FRAME | 17 CANOPY | 29 PIPE HANDRAIL, PAINTED COLOUR: TOWNY ROSE |
| 6 ROLL SHUTTER - ANODIZED ALUMINUM PROVIDE AT ALL WINDOWS | 18 PREFINISHED METAL FLASHING - COLOUR: CHARCOAL | 30 CHAIN LINK FENCE NOT SHOWN FOR CLARITY REFER TO SITE PLAN |
| 7 BREAK SHAPE ALUMINUM ANODIZED ALUMINUM | 19 PRECAST CONCRETE WINDOW SILL - NATURAL | 31 60x60x10 SMOOTH FACE STACK BOND COLOUR TO MATCH ADJACENT BLOCK |
| 8 PREFINISHED METAL FLASHING - COLOUR: CHARCOAL | 20 200mm CONCRETE BLOCK - SMOOTH FACE COLOUR: TOWNY ROSE | 32 EXPOSED CONCRETE FOUNDATION WALL |
| 9 PRECAST CONCRETE WINDOW SILL - NATURAL | 21 METAL BENCH | 33 CONCRETE COLUMN - NATURAL |
| 10 200mm CONCRETE BLOCK - SMOOTH FACE COLOUR: TOWNY ROSE | 22 CONTROL JOINT | 34 CONCRETE BEAM - NATURAL |
| 11 CONCRETE COLUMN COLOUR: MESA BUFF | 23 SOFFIT - STUCCO COLOUR #1 - SUNSET QUARTZITE | 35 NOT USED |
| 12 PAINTED STEEL DECK COLOUR: ????? | 24 SULLAM BEAM (STAINED) | 36 NEW SIGNAGE LETTERS |
| 13 ANODIZED METAL FLASHING | | |