



Literacy

SD22 Programming
and Planning for
Success 2025–2028



Why is Literacy Important?

The Impact of Literacy in Life



Educational Success & Development

- Academic foundation for all subject areas
- Cognitive growth for critical thinking and problem-solving
- K-4 transition from 'Learning to read' to 'Reading to Learn'

Health & Wellbeing

- Builds confidence and independence to make informed decisions related to both mental and physical health

Social and Economic Development

- Encourages active citizenship by adopting a community mindset
- Improves social equity by reducing the risk of social exclusion
- Builds empathy and connection by exposing people to different perspectives

What have we been noticing?

Provincial

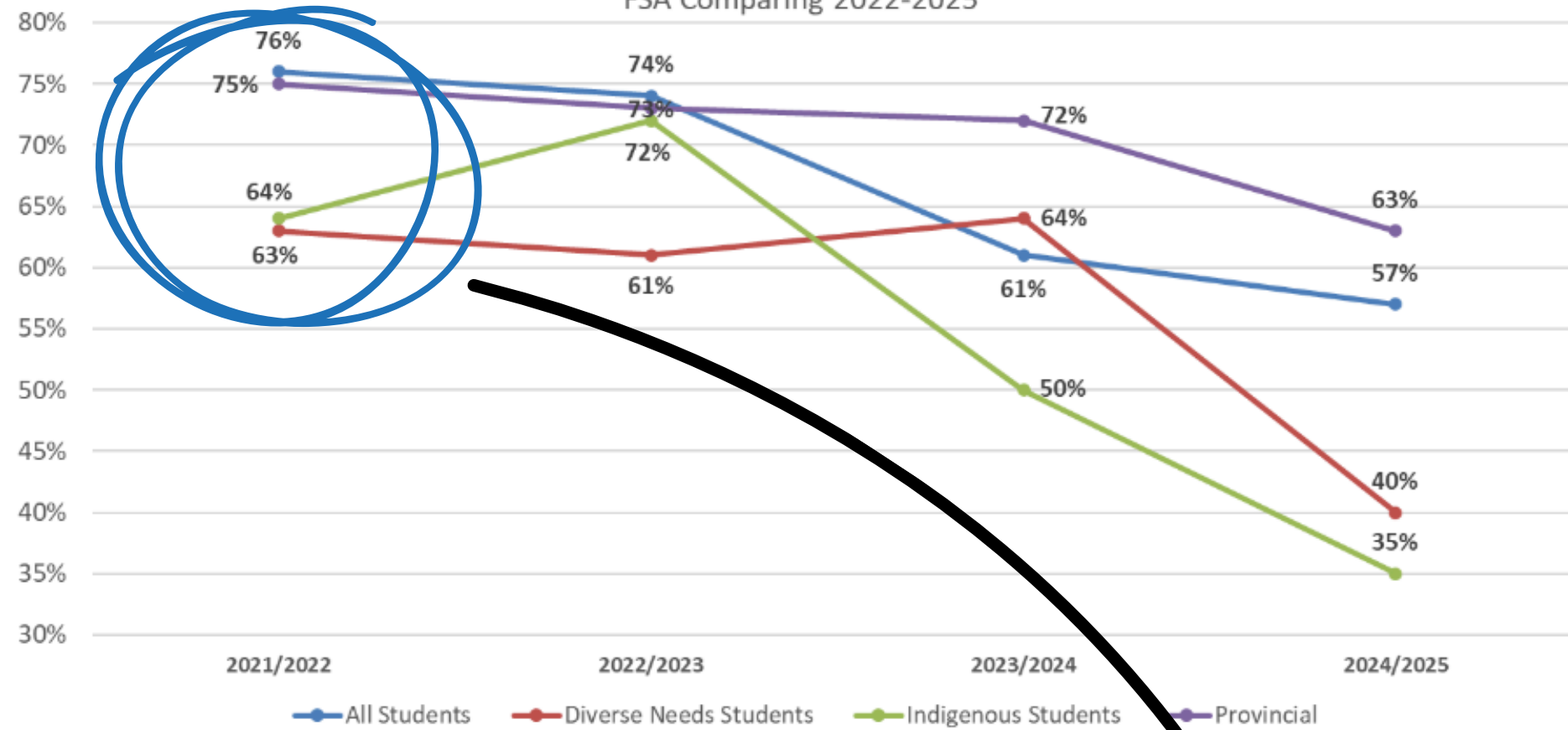
- Literacy proficiency has been on a downward trend
- Increased concern over student absenteeism
- Increased concern over students social/emotional mental health – **positively trending upwards**

Local

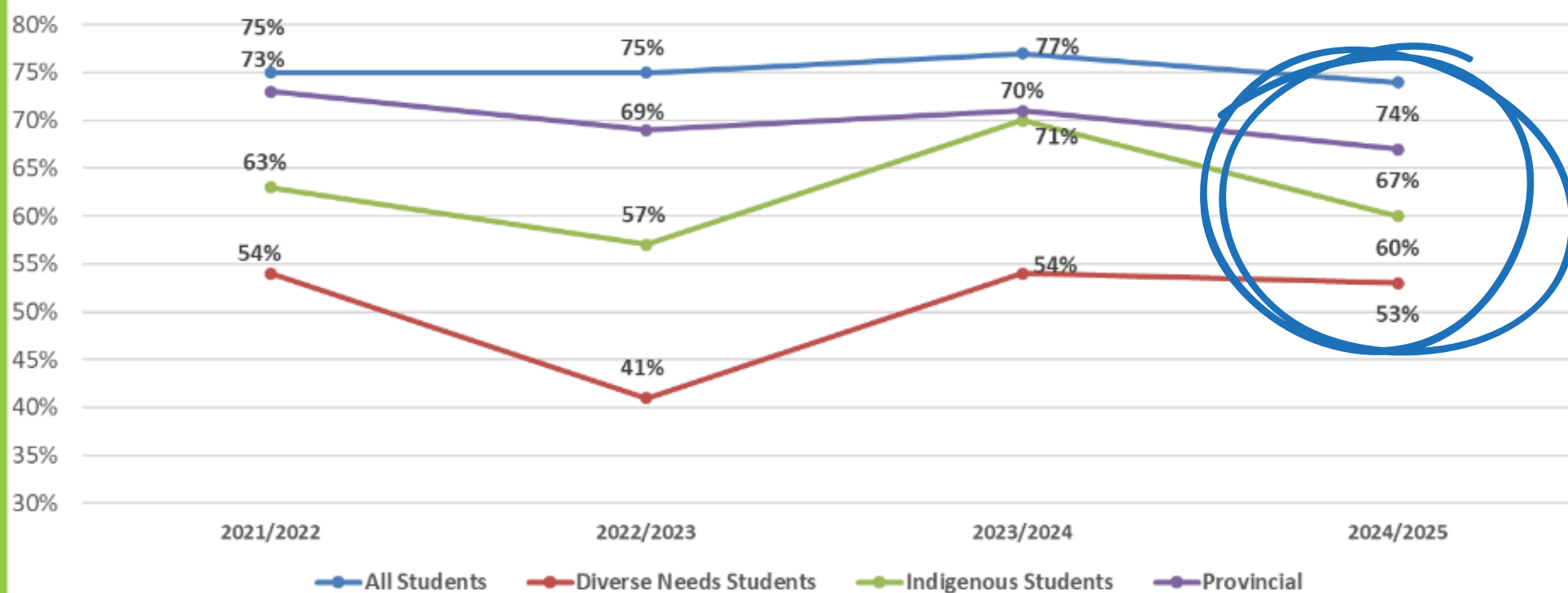
- Attendance across grades is a concern – **positively trending upwards**
- Children are not arriving to kindergarten with the same oral language skills
- Students are demonstrating lower stamina and enagement with written output
- Secondary teachers have noted that students arriving in grade 8 do not have the same proficiencies in a variety of literacy skills.



SCHOOL DISTRICT #22 VERNON DISTRICT DATA
LITERACY GRADE 4
On Track-Extending
FSA Comparing 2022-2025



SCHOOL DISTRICT #22 VERNON-DISTRICT DATA
LITERACY GRADE 7
On Track/Extending
FSA Comparing 2022-2025



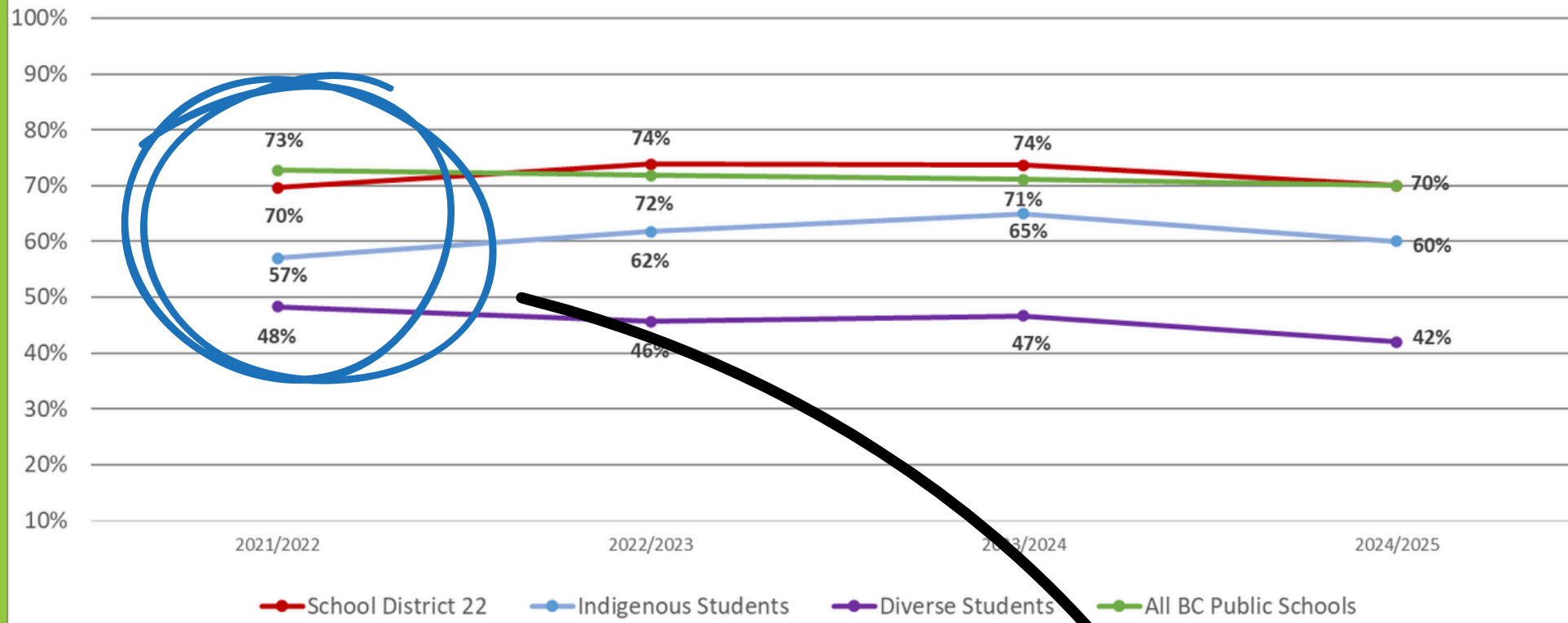
SD22 Gr. 4 & 7

Foundation Skills Assessment - Literacy

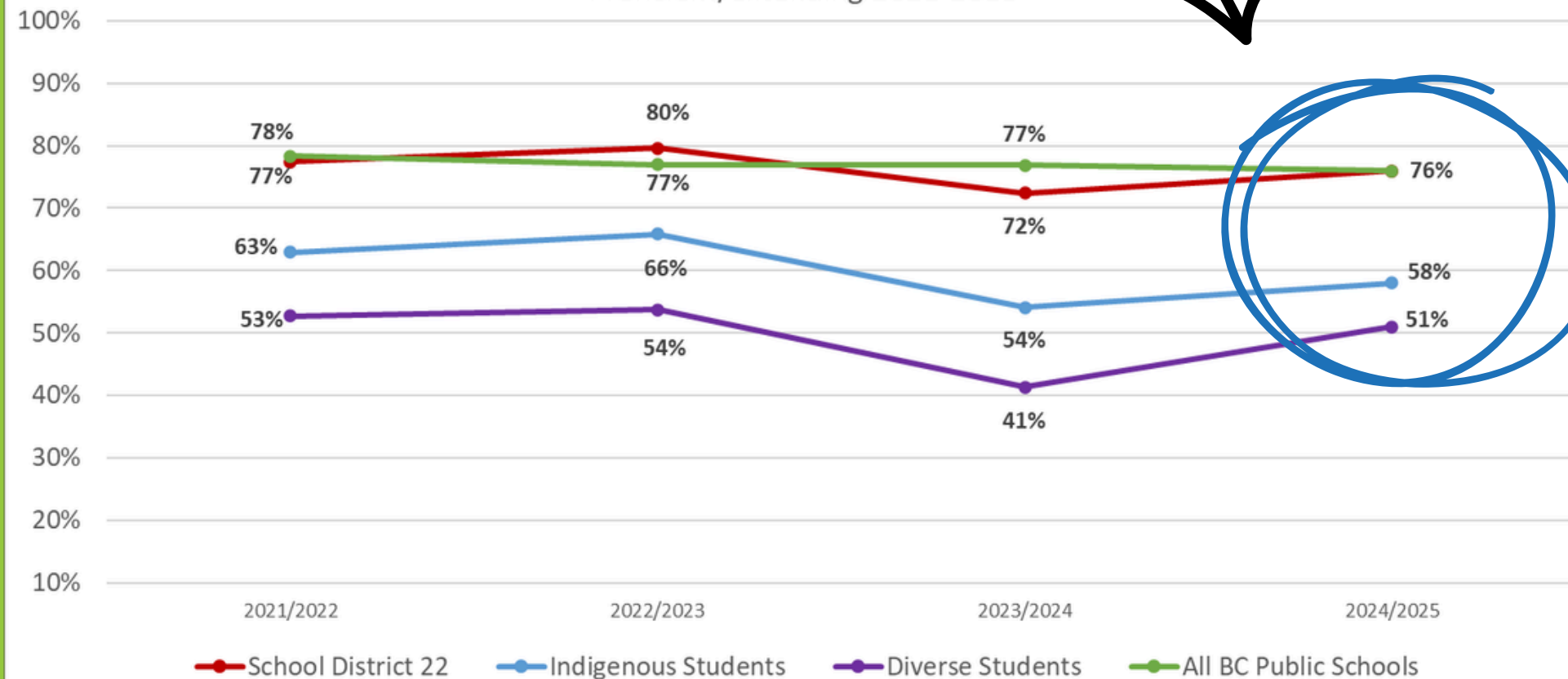
Literacy Trends

- Gr. 4 FSA literacy results have been on a downward trend for the past 4 years while grade 7 have remained stable over the same period.
- Cohort analysis is showing a downward trend from 4 to 7

SCHOOL DISTRICT#22 VERNON
Literacy Assessment 10
Proficient/Extending 2020-2025



SCHOOL DISTRICT# 22 VERNON
Literacy Assessment 12
Proficient/Extending 2021-2025



SD22 Gr. 10 & 12

Graduation Literacy Assessment

Literacy Trends

- Literacy proficiency has remained constant over the four year period.
- Cohort analysis shows an upward trend from 10 to 12.

How is the Province being Responsive?

Provincial Focus with Targeted Funding

MECC announces \$30 million over three years to:

- expand services of POPEY
- support professional learning on evidence-based approaches in literacy for educators

April 2024



Curriculum Support

MECC releases K-4 Literacy & Numeracy progressions to:

- describe what proficient students look like when they are demonstrating foundational skills in reading, writing, oral language, and math

June 2025



Kindergarten Screener Implementation

All Kindergarten students are required to be screened on essential literacy skills

Districts develop literacy plans to support the implementation of K-3 literacy screening and professional learning that supports children in their development of literacy skills

Sept 2025



K-3 Screener Implementation

All K-3 students are required to be screened on essential literacy skills

The MECC intends to build a made in BC universal K-3 literacy screener for 2027

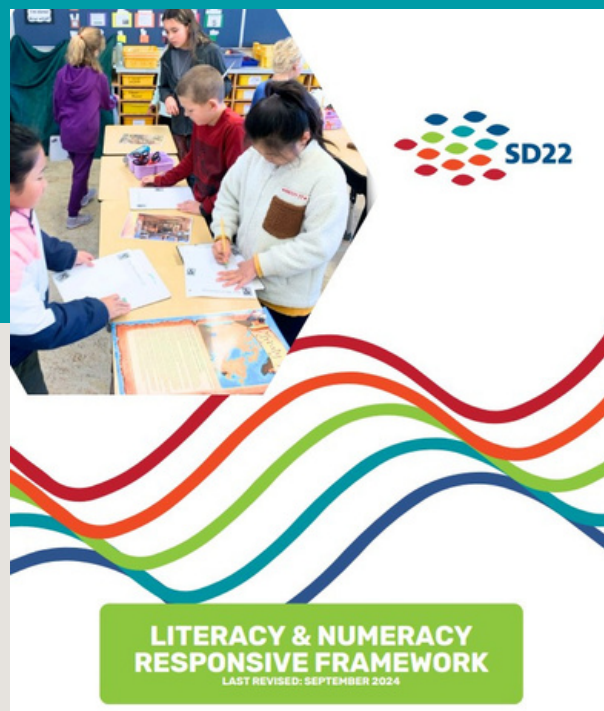
Sept 2026

How Are We Being Responsive?

SD22 Strategies to Improve Literacy

Responsive Framework

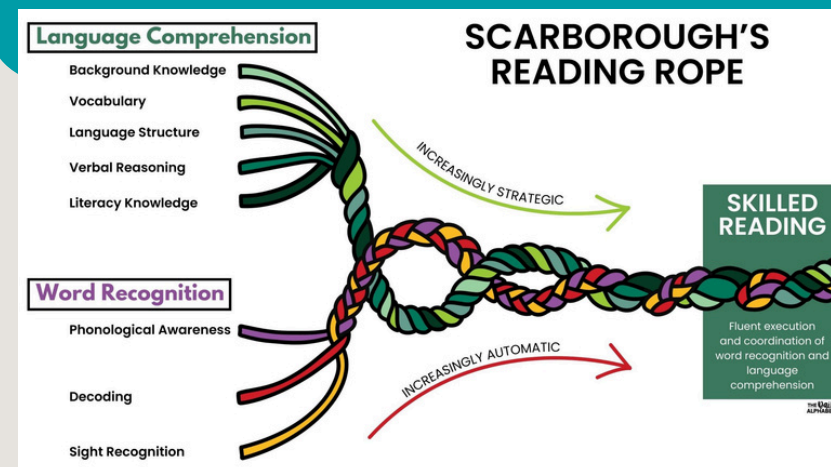
This Responsive Framework is constructed using current research in literacy and pedagogy that support inclusive and equitable learning environments.



Science of Reading

Evidence that informs how proficient reading & writing develops to support instruction that improves student outcomes

- Phonemic Awareness
- Phonics
- Fluency
- Vocabulary
- Comprehension



K-3 Literacy Screener

- Helps determine where students are at regarding their reading skill development
- Identifies students who may require additional instructional supports and/or interventions.



Embedded Professional Learning

- Learning Coordinators and Early Learning Success Teachers embedded within schools
- Classroom and whole school residencies focused on literacy
- School Learning Leads





Supporting Early Literacy K-3

Early Learning Success Teachers

Allison Jmayoff

Deanna Michaud



What is an Early Literacy Screener?

All early literacy screening tools should be:



- ❑ **Brief**
- ❑ **Specific** (measures specific foundational early literacy skills; may inform instruction, supports and intervention)
- ❑ **Reliable** (produces consistent results) and **Valid** (measures the skills it is intended to)
- ❑ **Predictive** (forecasts future reading performance with reasonable accuracy)
- ❑ **Administered by a teacher**, ideally the classroom teacher

Literacy Screener Importance

- **Builds strong early literacy foundations**
- **Identifies skills children have and still need**
- **Helps us meet students where they are**
- **Guides targeted instruction for growth**
- **Supports future reading and writing success**

Early Literacy

Essential Skills Profile (K-3)



SD22 Literacy Screenener – ELP

The foundational literacy
components:

- Oral Language
- Phonological Awareness
- Alphabet Knowledge
- Phonics

Screenener Task:

ORAL LANGUAGE



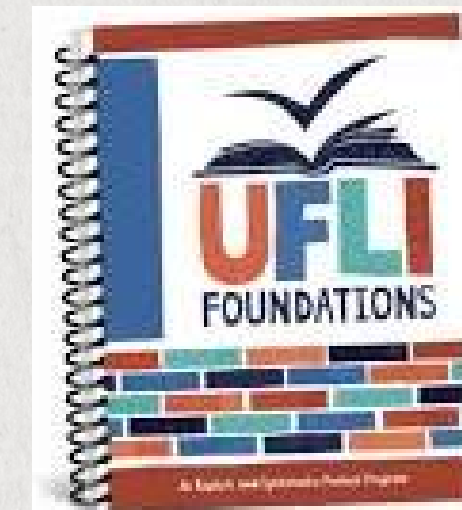
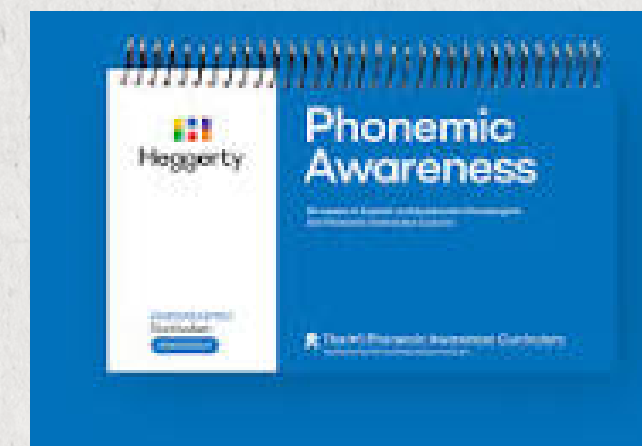
- **A child's ability to understand and use spoken words to communicate**
- **Includes listening, talking, answering questions, and sharing ideas**
 - For example:**
 - **understand oral directions,**
 - **speak fluently with expression,**
 - **participate in classroom language activities**

Screenener Task:

PHONOLOGICAL AWARENESS

- How well a child can hear and play with the sounds in spoken words
- Includes items like noticing rhymes, clapping out parts of words, and hearing beginning sounds in words

C - A - T



Screenener Task:

ALPHABET

KNOWLEDGE



- A child's ability to recognize letters and name letters
- Know there are uppercase and lowercase letters
- Know letters have specific sounds

Screenener Task:

PHONICS

THREE LETTER WORDS			
 Ant	 Bat	 Cat	 Dog
 Sun	 Jar	 Bus	 Car
 Hat	 Pot	 Pen	 Map
 Fan	 Rug	 Pig	 Lid
 Bag	 Bed	 Zip	 Tag
 Cow	 Toy	 Box	 Key

- Letters and letter combinations have sounds, and that we use those sounds to read and write words
- Blending letter sounds to read words and breaking apart these sounds to write words

Supporting Priority Learners

- Culturally-responsive learning environments
- Early identification and equity-focused intervention
- Early support – small challenges don't grow into bigger reading difficulties
- Screening is aligned with evidence-based early literacy instruction
- Interventions are based on student strengths and needs (not labels or assumptions)

Literacy at Home



District ▾ Board of Education ▾ Schools ▾ Families ▲ Programs and Services ▾ Staff ▾



School District 22
Dream. Believe. Achieve.

- Fair Notice
- Accident Insurance Protection
- Approved Software
- Assessment & Reporting +
- Bus Transportation
- DPAC - Link to Website
- Graduations Requirements & Transcripts +
- Literacy** ←
- MyEd BC
- Parent Concerns
- Safe & Inclusive Schools +
- Scholarships
- SD22 Welcome Centre
- Student Registration & Transfers
- Substance Abuse Resources

Ending Now

Family Session: Digital Safety - May 13, 2026 →

Accessibility Public Feedback Tool →

SD22 Welcome Centre →

[View All News](#)

[Student Registration](#)

[School Year Calendar](#)

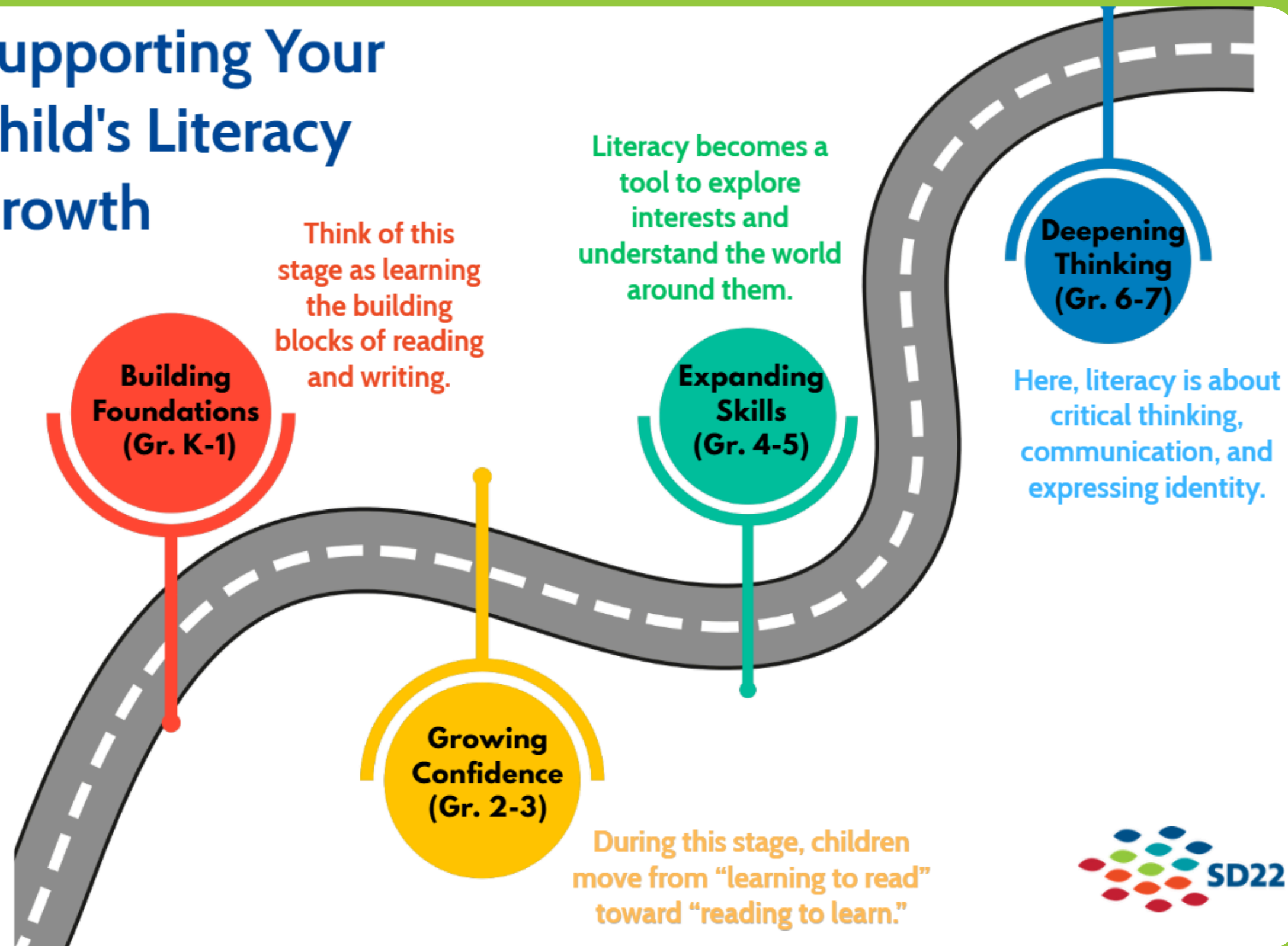
[School](#)

[Strategic Plan](#)

[Employment](#)

Supporting Your Child's Literacy Growth

Supporting Your Child's Literacy Growth



Supporting Your Child's Literacy Growth

Supporting Your Child's Literacy Growth Expanding Skills (Gr. 4-5)



Children are learning to:

- Understand more **complex** ideas and vocabulary
- Read for both **information and pleasure**
- Make **inferences** (reading between the lines to understand themes not directly stated)
- Write **organized paragraphs** with details

Literacy at Home:

1. Read and Discuss

- Choose a book to read together or listen to an audiobook as a family.
- Ask for opinions: "What do you think the author wants us to think about?"

2. Encourage Curiosity

- Explore nonfiction books or articles on topics they love.
- Look up answers to questions together—model being a learner.

3. Support Writing

- Invite kids to write stories, lists, graphic novel panels, or create how-to instructions.
- Talk through planning: "What are your big ideas? What will you add?"

4. Build Vocabulary Naturally

- Notice interesting words in daily life (signs, shows, books).
- Play "use it in a sentence" with new words.

5. Real-Life Literacy

- Let them help with recipes, instructions, or assembling items.





Questions & Comments