



J.W. Inglis Child Care Facility

INFORMATION SESSION



Information Session

Today's information session will provide key points about :

- Background
- Project overview
- Operations
- Design concept
- Q & A



Background

The ChildCareBC New Spaces Fund is instrumental in creating thousands of new licensed child care spaces throughout BC to improve access to child care for families that is:

- affordable
- high-quality
- accessible
- inclusive



Community Need

In 2023, the RDNO reached out to School District 22 to explore changes to their original “Lumby School’s Out” child care project. This resulted in:

- Discussion about project expansion
- School District 22 conducting a community needs assessment
- Engagement with local child care providers
- New project application submitted by School District 22



ChildCareBC New Spaces Fund

The new child care spaces in this project are made possible through more than \$11.5 million from the ChildCareBC New Spaces Fund. This fund is jointly supported by provincial investments and federal funding under the Canada/British Columbia Canada-wide Early Learning and Child Care Agreement. British Columbia and the federal government signed an extension to the agreement for 2026-27 until 2030-31.



Project Overview - Operations

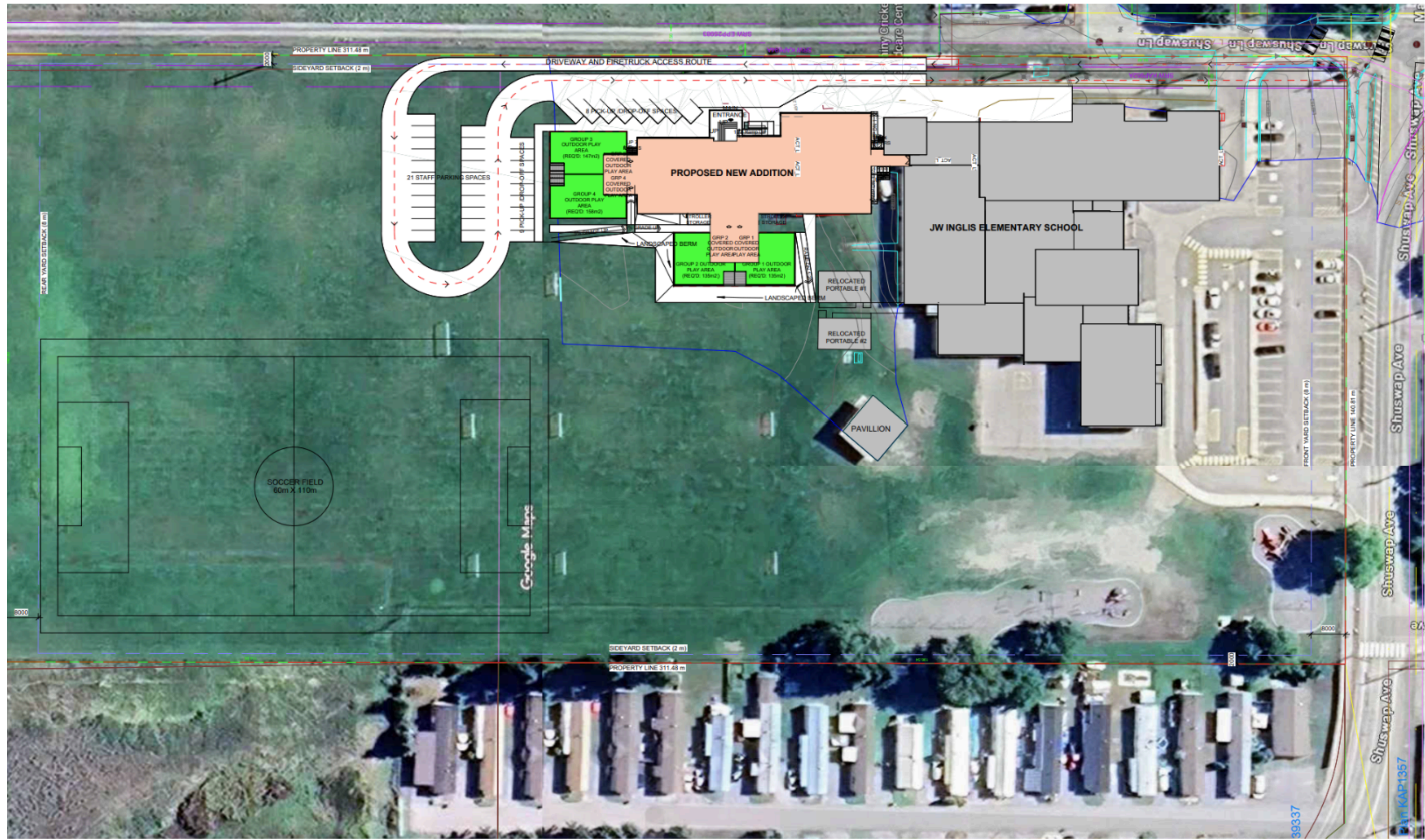
Whitevalley Community Resource Centre will be the licensed operator of the child care programs:

- Infant/Toddler Group Child Care - 24 licensed spaces
- 3 to 5 year Group Child Care - 25 licensed spaces
- School-Age Care on School Grounds - 54 licensed spaces

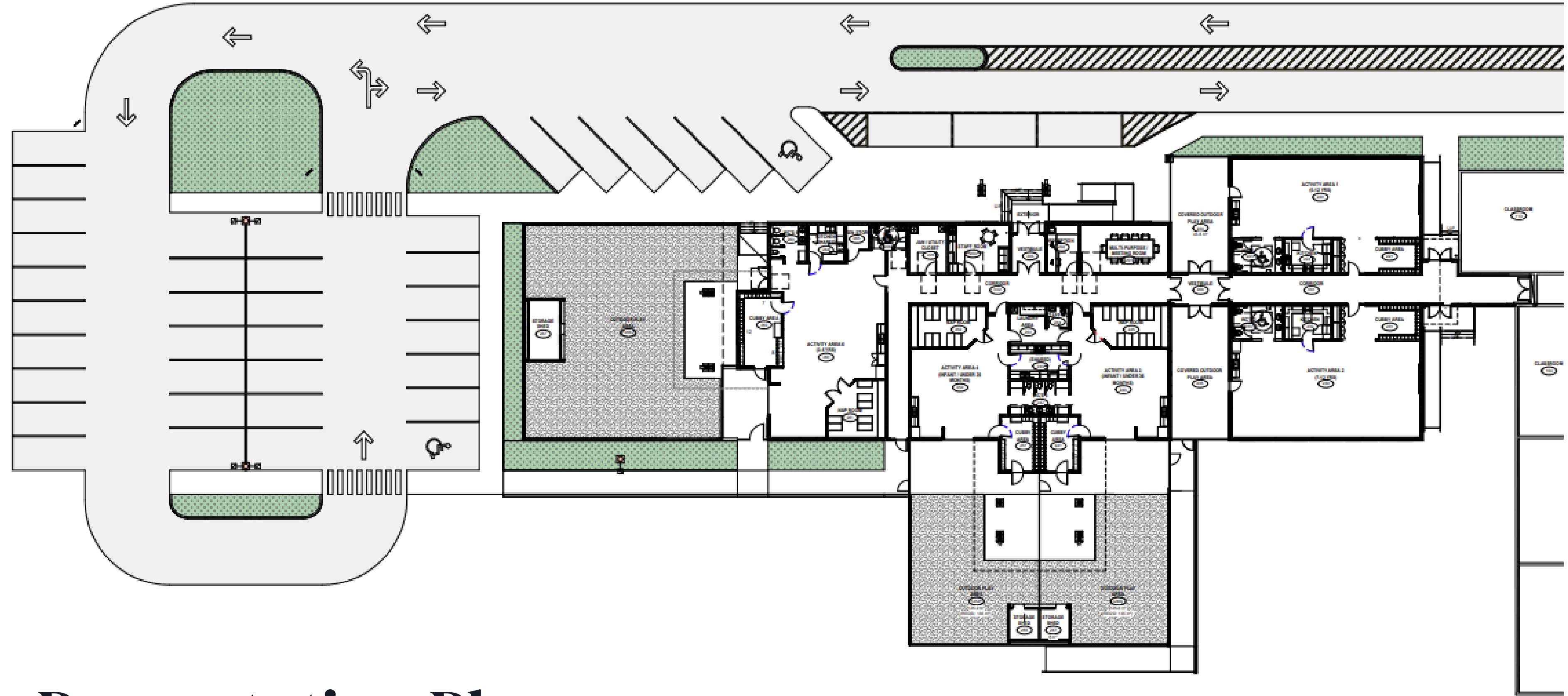


Project Overview – Child Care Facility

- In Progress: Project design
- Next Stage: Permitting, Approvals & Contractor Procurement
- Spring 2026: Site Preparation & Construction
- Winter 2026: Project Completion, including Licensing
- Early 2027: Tentative opening



Presentation Plan



Presentation Plan

North East
Front Perspective



1 North East Front Perspective 2
SCALE:



North East
Perspective

2 3D - North East Perspective 2
SCALE:



3 3D - North West Perspective
SCALE:

North West
Perspective



**West Front
Perspective**

4 3D - West Front Perspective
SCALE: 1" = 10'

**North
Elevation**

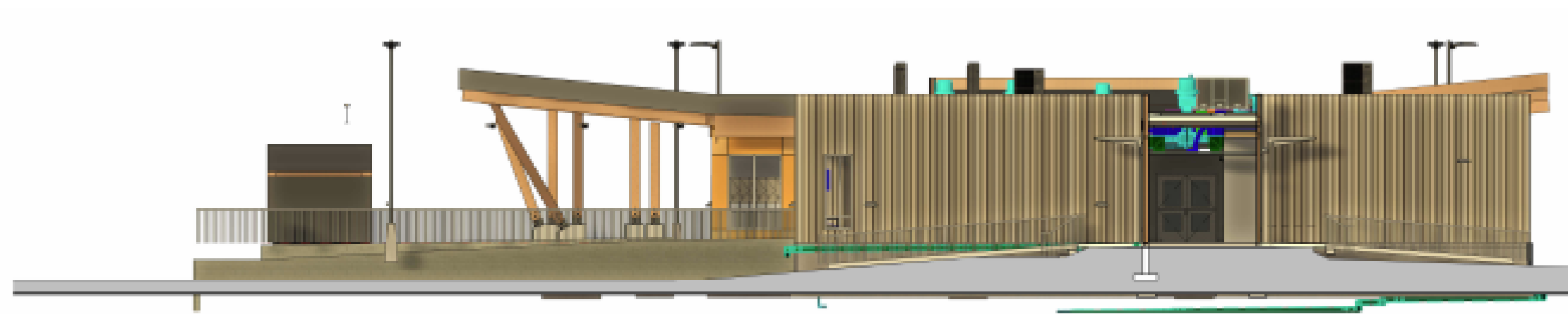


1 NORTH ELEVATION
SCALE: 1" = 100'



**East
Elevation**

2 EAST ELVATION
SCALE: 1" = 100'



South
Elevation

3 SOUTH ELEVATION
SCALE: 1" = 100'

West
Elevation



4 WEST ELEVATION
SCALE: 1" = 100'



Feedback Opportunities

School District 22 welcomes feedback from the community on the design concept.
To provide feedback, please:

- Complete a J.W. Inglis Child Care Facility Feedback Form today
- Visit School District 22 website for the J.W Inglis Child Care Facility Community Feedback Form - open until Friday, January 16.



Q & A

Thank you for joining us!